

# ***TWO WAY MIRROR FILM***

## ***BROCHURE***

***Without Film***



***With Film***



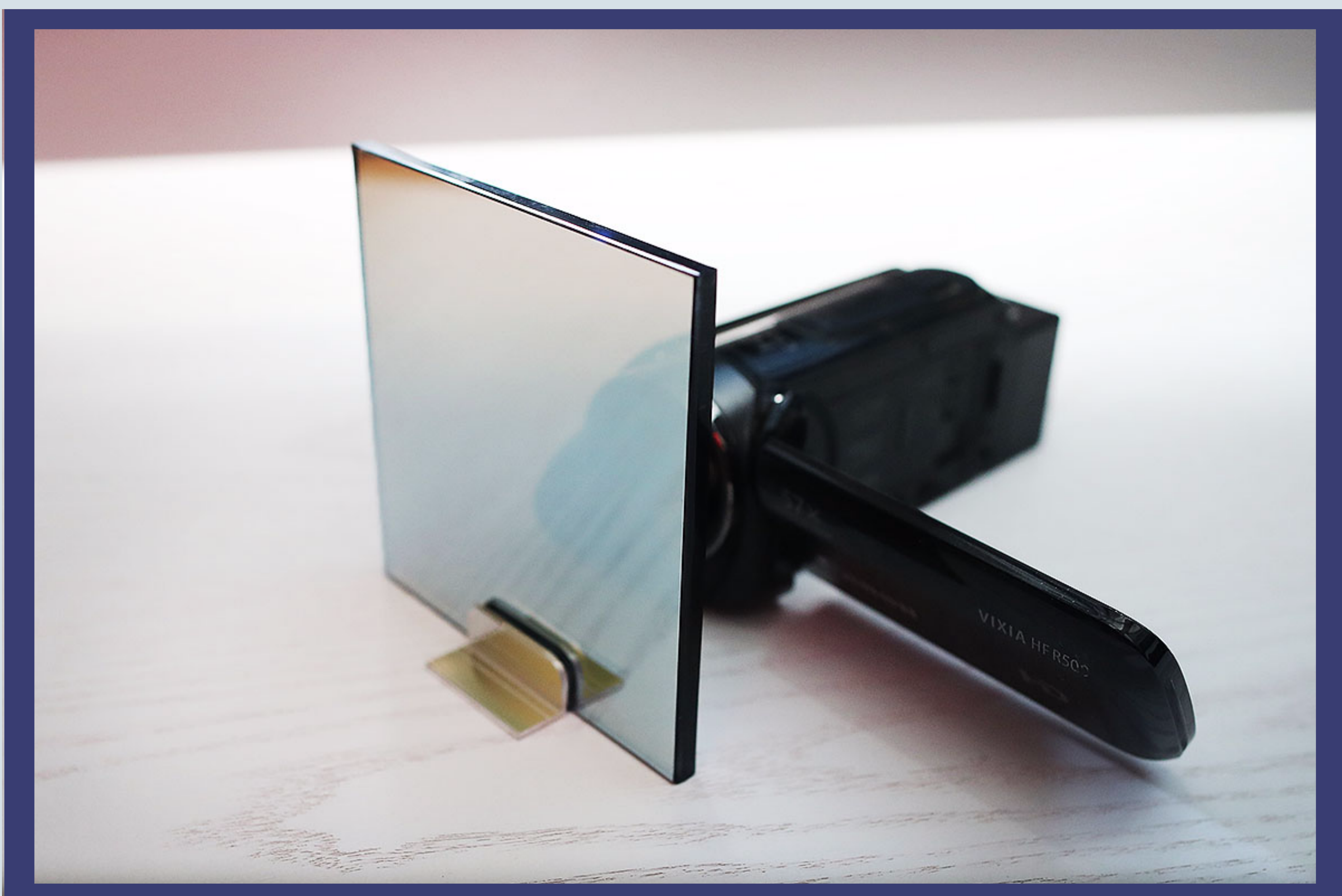
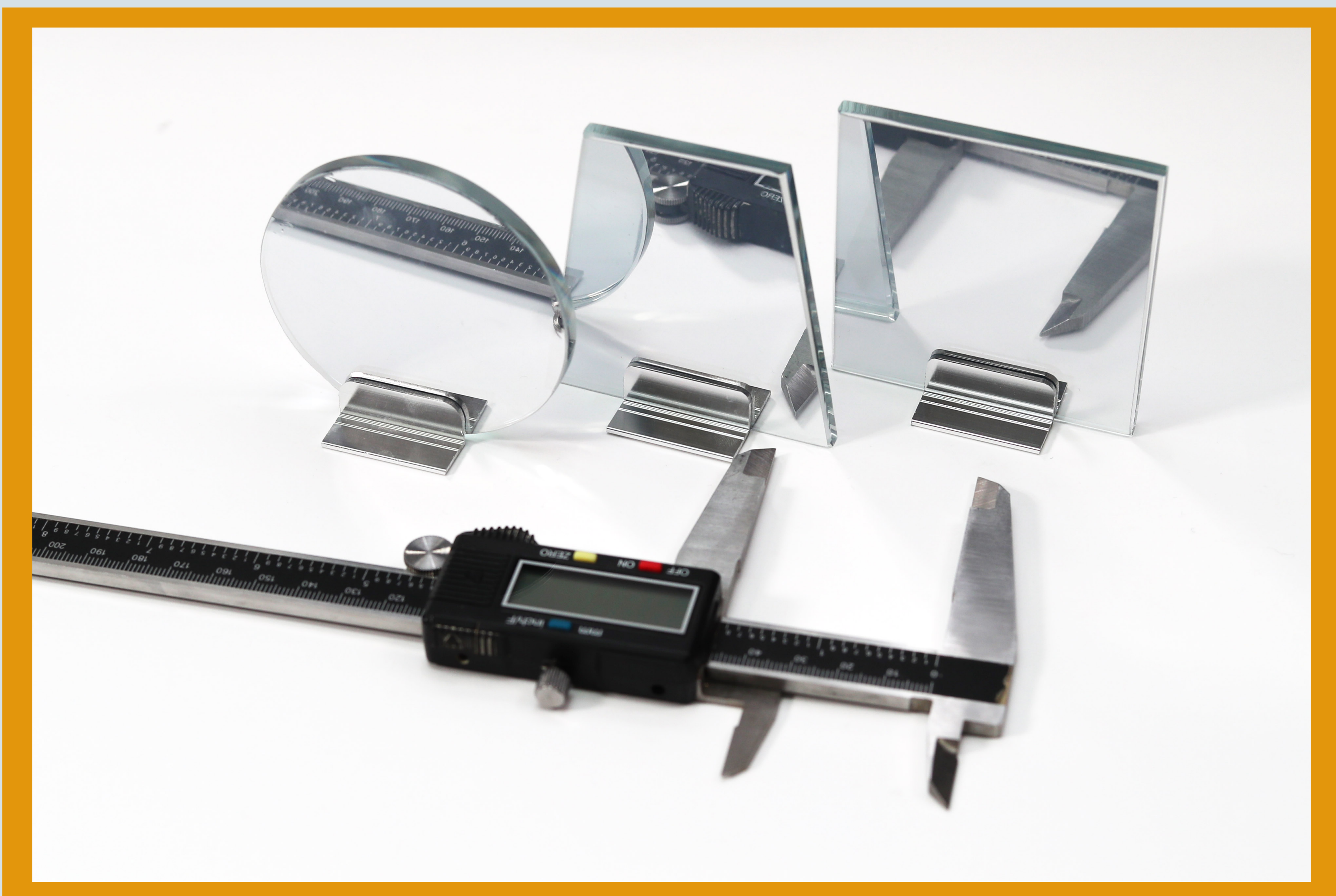




## ***What is a two way mirror?***

*No, it is not magic. It's SCIENCE!*

A two way mirror, also known as a one way mirror, is a semi-transparent mirror that is traditionally made for privacy and security purposes. It is made on a grey glass substrate and the mirror coating is baked on during the manufacturing process.

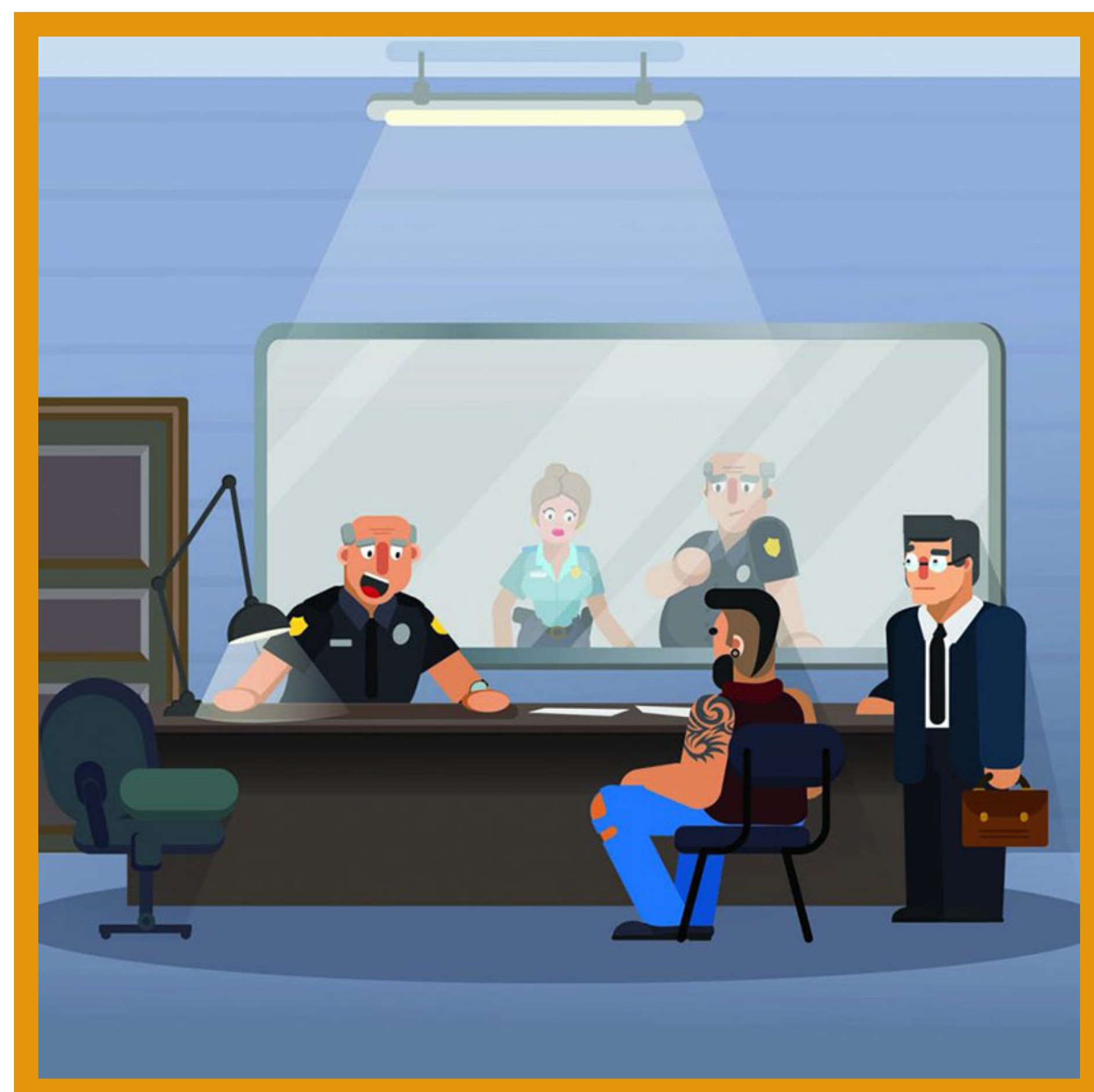


*Standard Glass Two Way Mirror Sample*



## ***Advantages of Two Way Mirror Film***

Transform an existing window into a two way mirror with film. Two way mirror film blocks 95% of light and delivers the highest level of privacy. During daytime, sunlight creates glare on the surface of the mirror, making it impossible to see inside. From inside, you are still be able to see outside. During nighttime, the privacy offered by sunlight is gone, so we recommend that you install lighting outside the window to create glare.



*Cartoon interrogation using two way mirror.*

## ***Applications***

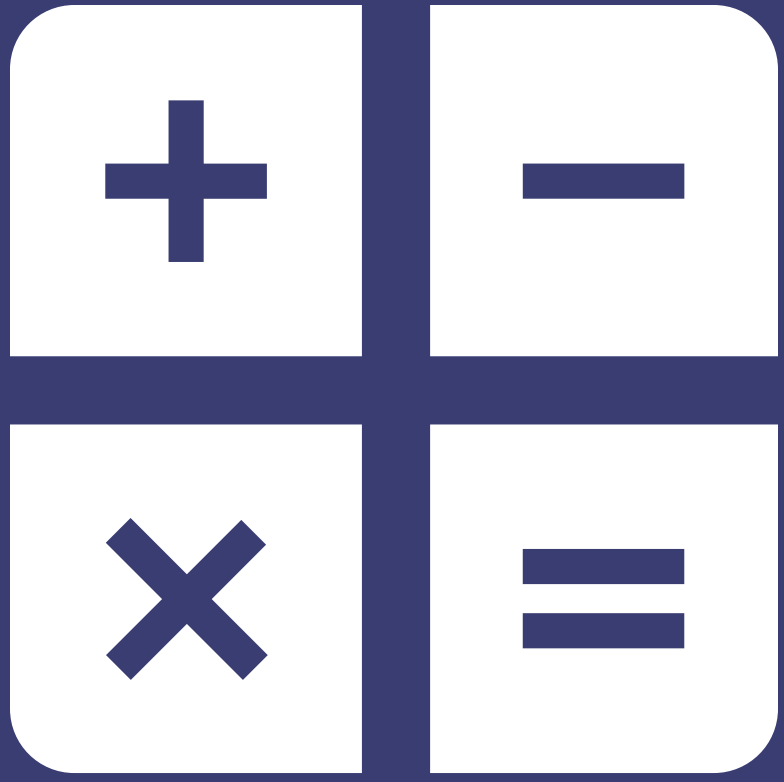
- Schools
- Home Privacy
- Dance Studios
- Store Security
- Glare Reduction
- Office Privacy
- Jails & Prisons
- Interrogation Room
- Hidden Camera
- Market Research
- Clinical Observation
- Stage Effects
- Infinity Mirror
- Safe Room



## ***Product Features***

- Maximum Size: 6ft x 100ft
- Maximum possible privacy (5% transparent)
- Turns Clear Glass into a Two Way Mirror
- 80% reflective, 5% transparent, blocks 99% UV Light
- Easy to install, thicker than most films on the market
- Cuts with scissors
- Inexpensive alternative to the Glass Two Way Mirror
- Improves Energy Efficiency
- Is carefully packaged and fully insured





## *Custom sizes cut to order*

Use our Online Price Calculator to order the exact size mirror film you need for your project.



## *Order Film Rolls*

36in x 24ft

36in x 249ft

36in x 100ft

48in x 25ft

48in x 50ft

48in x 100ft

60in x 25ft

60in x 50ft

60in x 100ft

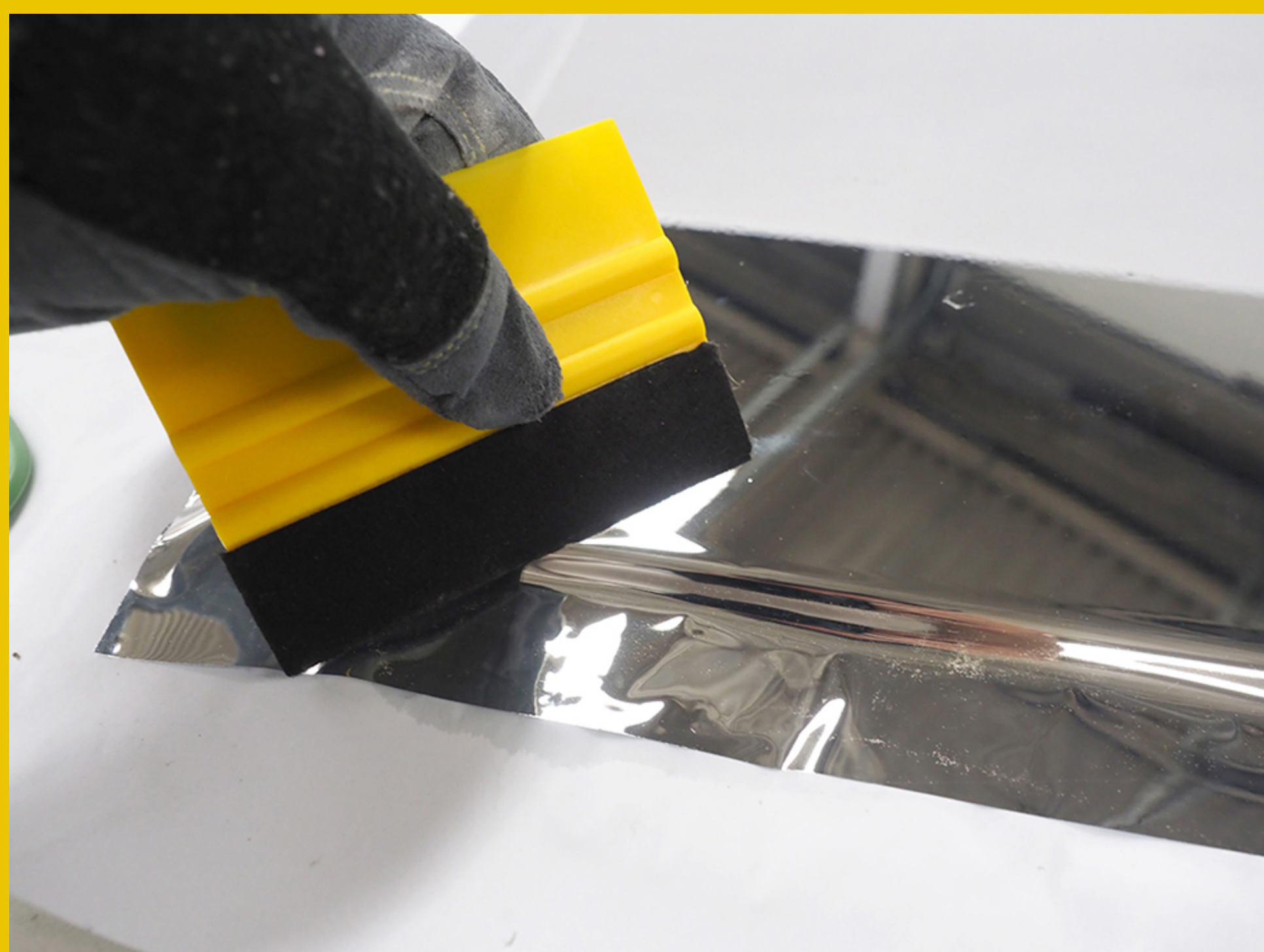


## ***EASY STEP-BY-STEP INSTALLATION PROCESS:***

1. Trim film
2. Spray the film solution
3. Lay film on glass
4. Smooth with squeegee
5. Trim excess film with razor



Application Kit





# ***CHECK OUT OUR FILM DEMONSTRATION VIDEO***



**How to...**

# **Install Mirror Film**





*Reflective side of mirror from inside interrogation room*



*Transparent side of mirror from observation side*



*Suspect being interrogated on reflective side of mirror*

## Examples of Observation Rooms

We have all seen a cop drama TV show or film in which a criminal suspect is interrogated while police watch from behind a mirror. Why can't the suspect see those watching him behind the mirror?

The answer lies in the level of lighting in both rooms. The room the suspect is in is kept very brightly lit, so that the light in the room reflects off the mirror's surface. The observation room containing the police, on the other hand, is kept dark, so that little to no light gets through the glass.

As a result, the suspect sees only his own reflection and the police see into the suspect's room clearly. If the lights in the suspect's room were suddenly turned out, or the lights in the observation room suddenly turned on, then the two way mirror would become a window.



Although the film blocks 95% of light at night, because the light is reversed, you may see through the window depending on the amount of light on the other side. We suggest ordering samples for testing.







---

# ***Questions? We've got answers***

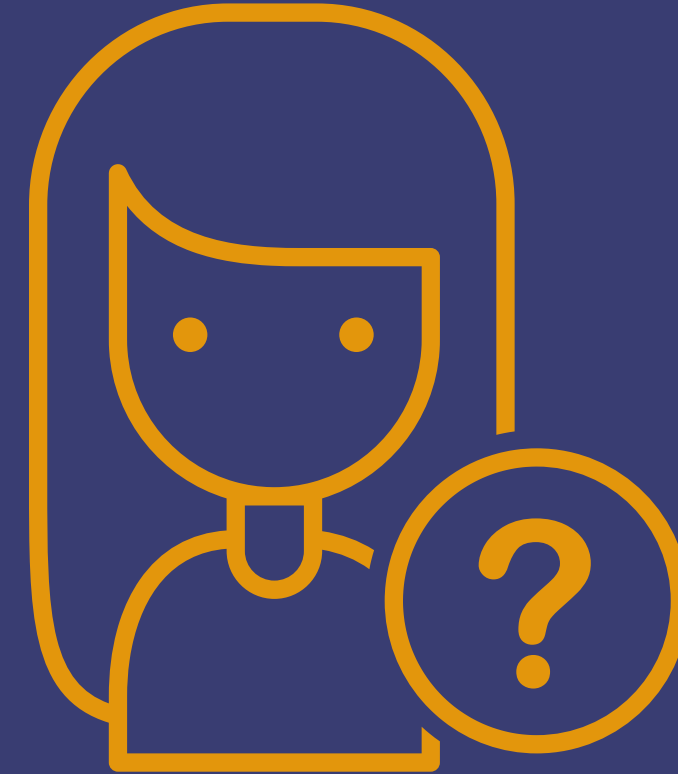
With 20 years experience manufacturing two way mirrors, our team of engineers & glaziers has the expertise to quickly and accurately answer any questions you have.



*I'm James, sales engineer for Two Way Mirrors.*

*Feel free to contact me at,*

*james@twowaymirrors.com  
(419) 787-4526*



*Hi, I'm Krista, sales manager for Two Way Mirrors.*

*Please contact me at,*

*(419) 461-0710  
krista@twowaymirrors.com*



***For More Information  
Please Visit***

**<https://www.twowaymirrors.com/two-way-mirror-film/>**